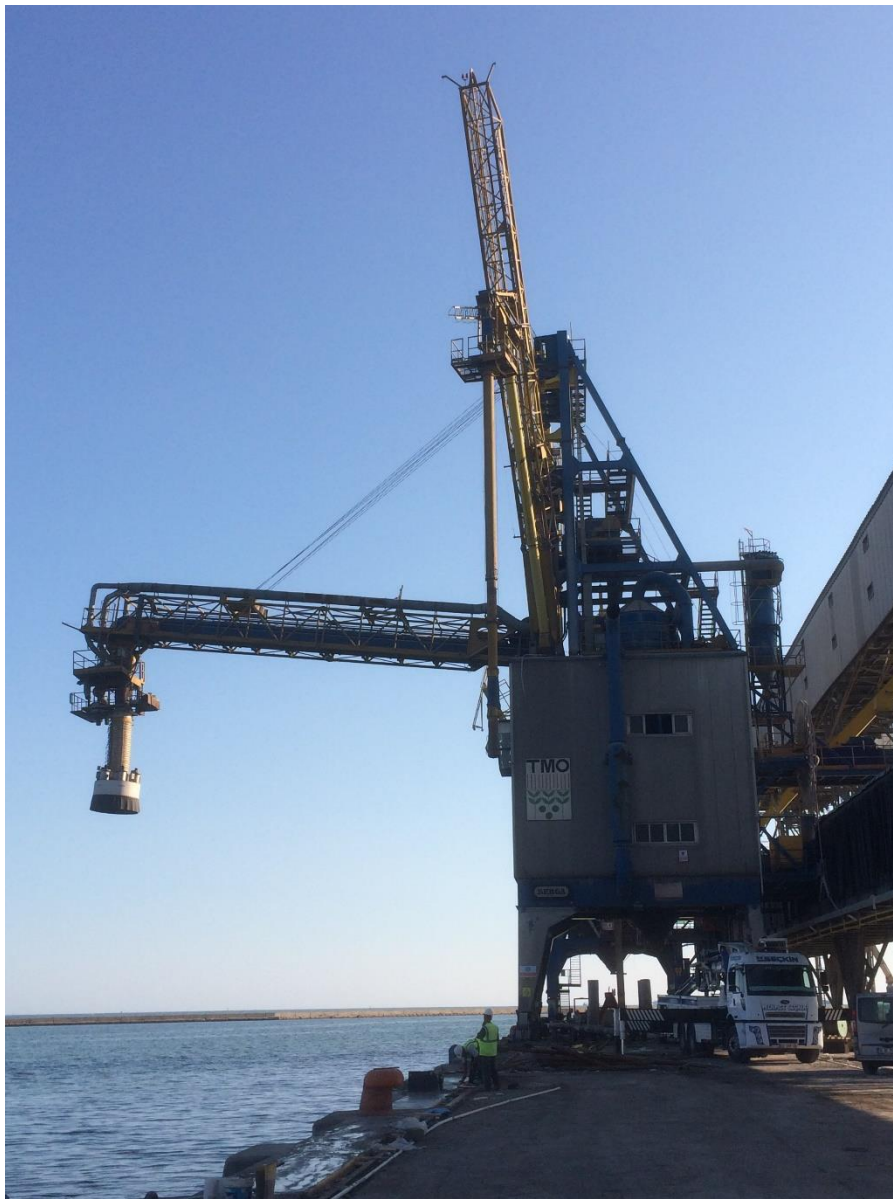


PROJECT SHEET - 1304

SHIPLOADER / UNLOADER: MERSIN PORT (TMO)

EQUIPMENT	Ship Loader/Unloader
OPERATION MODE	1200tph (Grain)
CLIENT	Turkish Grain Board
CONTRACT TYPE	Repair&Revision
LOCATION	Mersin / Turkey
COMMISSIONED	2017

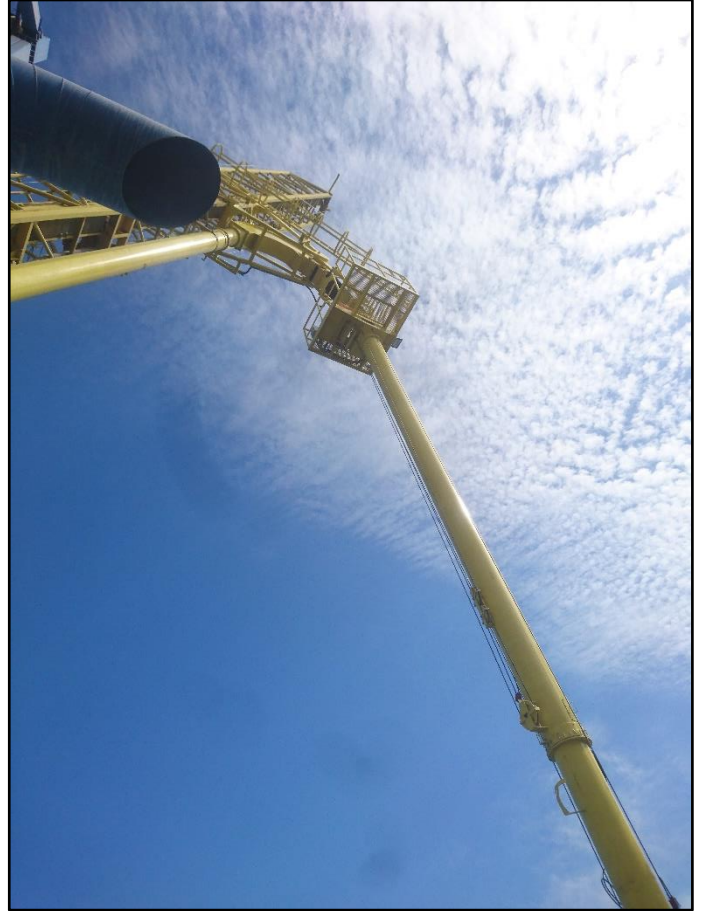


ISKAR has completed repair and revision works for one 1200 tph loading and 2 x 300 tph unloading capacity combi shiploader- unloader crane at Mersin Port on TMO Jetty. This machinery was damaged due to an accident in June 17. Bulk unloading jib 01 and related machinery, including suction tubes, vertical and horizontal machinery with all accessories were new built and erected on to the crane. Complete new gangway ladder with self levelling steps was new built and mounted on to the crane. As a part of this project, All lifting and luffing cables for the remaining 2 nos jibs and all safety switches were replaced and commissioned by ISKAR. During tests, flawless operation of the crane is ensured.

ISKAR Muhendislik Ltd. is solution provider and turnkey contractor for the materials handling machinery sector, with a special focus on port and dock cranes. ISKAR offers innovative technological solutions and tailored state of the art cranes as per customer specs.



iskar



iskarltd@iskarltd.com
www.iskarltd.com