

Floating Dock Cranes

Product Brochure

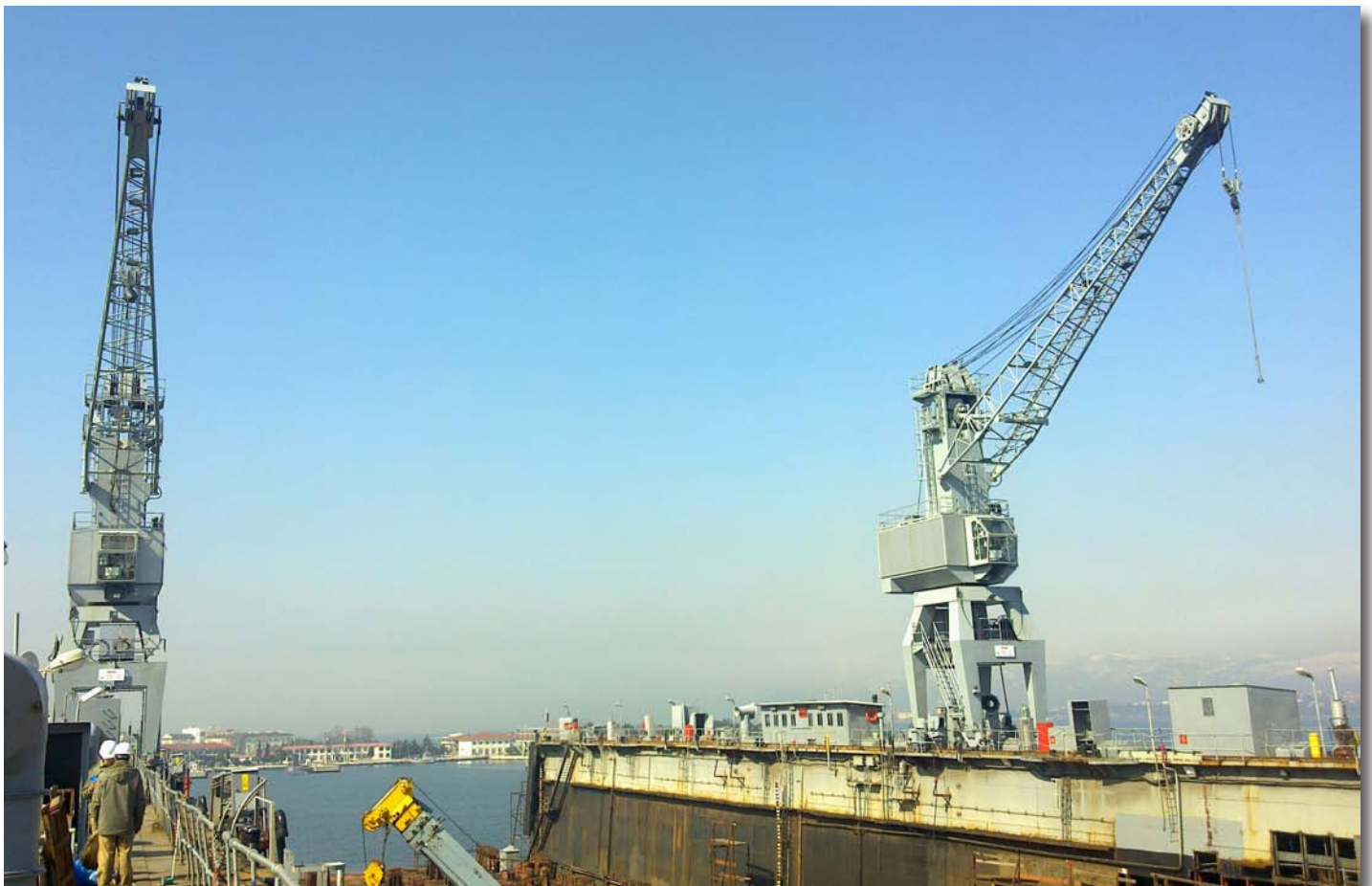
iskar
Mühendislik Ltd.



—Your Partner from Turkey—

Floating Dock Cranes

Cranes of YHV series are suitable for floating dock applications. Handling of hook loads for general ship repair and maintenance works are common operation modes. Typical of the YHV type crane design is the narrow rail span length and the feature to luff the jib down to rail level during towing of the dock on open seas. Floating dock cranes are the main power of ship repair yards and therefore shall be carefully engineered to achieve its duties.



ISKAR has supplied vast number of floating dock cranes around its region. This Expertise on slewing jib cranes allows us to supply cost effective, turnkey machinery with proven mechanical systems combined with latest automation technology.

Modular Production

Interchangeable Structures allows us to supply Optimal Dimensioned Floating Dock Cranes

Travelling Portal

ADJUSTABLE FOR DOCK SPAN

Box type, easy to access portal, filled with counterweight.

Slewing Body

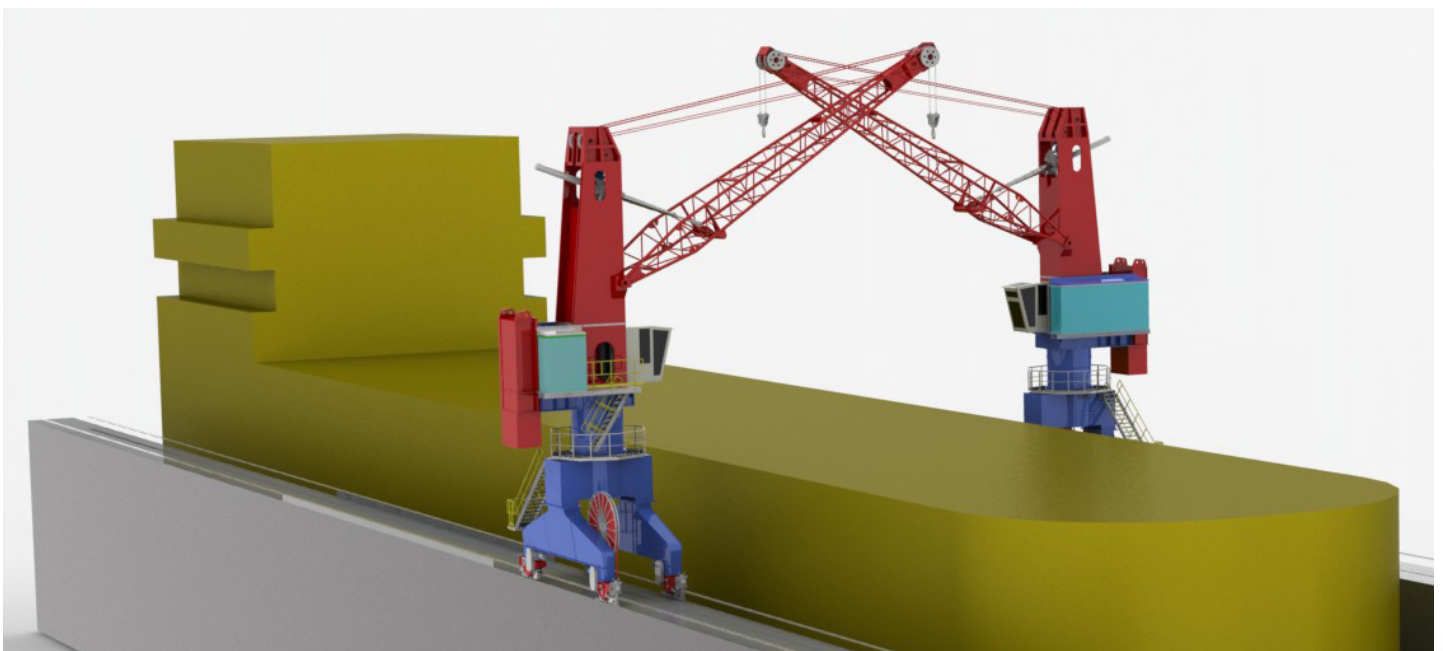
OPTIMIZED DIMENSIONS

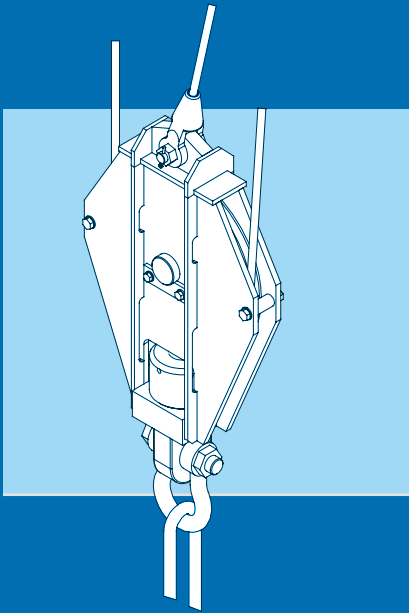
Slew ring type rigid crane, small dimensions, low dead-weight.

Jib System

SINGLE JIB OR DOUBLE LINK
LEVEL LUFFING

Various jib and luffing options.





"Well proven technology and products, combined with quality and reliability, makes us preferred partner in crane industry."

(T.Gunev, Founder)

YHV Type 5 / 15t Floating Dock Crane



Golcuk/Turkey



Mersin/Turkey



ISKAR cranes cover wide range of application areas.

YHV Type cranes are designed and manufactured in order to achieve trouble free performance in challenging conditions.

YHV Type cranes are mainly tailor made products to suit destination floating docks size, capacity and reply unique material handling requirements of our customers.



Standards

F.E.M. Regulations
European Normalized Stds.
EU Machinery Directives



- Jib can be luffed down to rail level
- Automatic Lubrication System
- Frequency controlled drives
- Rail Clamps
- Storm Locks
- Fire Alarm & Extinguish. Sys.
- Aviation Lights
- Fail-safe brakes
- Fail-safe limit switches
- Crane Automation System
- Overload Protection
- Data Logger
- Telecommunication Sys.
- Mono spiral Cable Reel
- Ergonomic Op. Seat & Cabin
- Air Conditioning

Application

Proven design for Travel, Slew,
Hoist and Luffing Machinery
Cost effective, solutions.

Latest standards on crane design and safety regulations are applied to all of our products.

F.E.M. 1.001 Rev.1998.10.01 rules are based to stability calculations, strength of structural and mechanical components. As per CE Certificate requirements, we follow;

EN 14985 Slewing Jib Cranes,
2006.004.108.EC EM Compatibility;
2006.95.EC Low Voltage Directive;
2006.42.EC Machinery Directive;



Turnkey

Modular design enables short transport and erection times on site. Turnkey delivery.



Level Luffing Slewing cranes are essential machinery for shipyards and ports due to their high productivity rates and low operating costs.



Our experience in crane business allows to respect all demands of our customers and to deliver a turnkey product which is reasonable in price and excellent in quality.



"ISKAR Special Project Cranes cover tailor made machinery for unique and challenging applications!"

Special Project Cranes

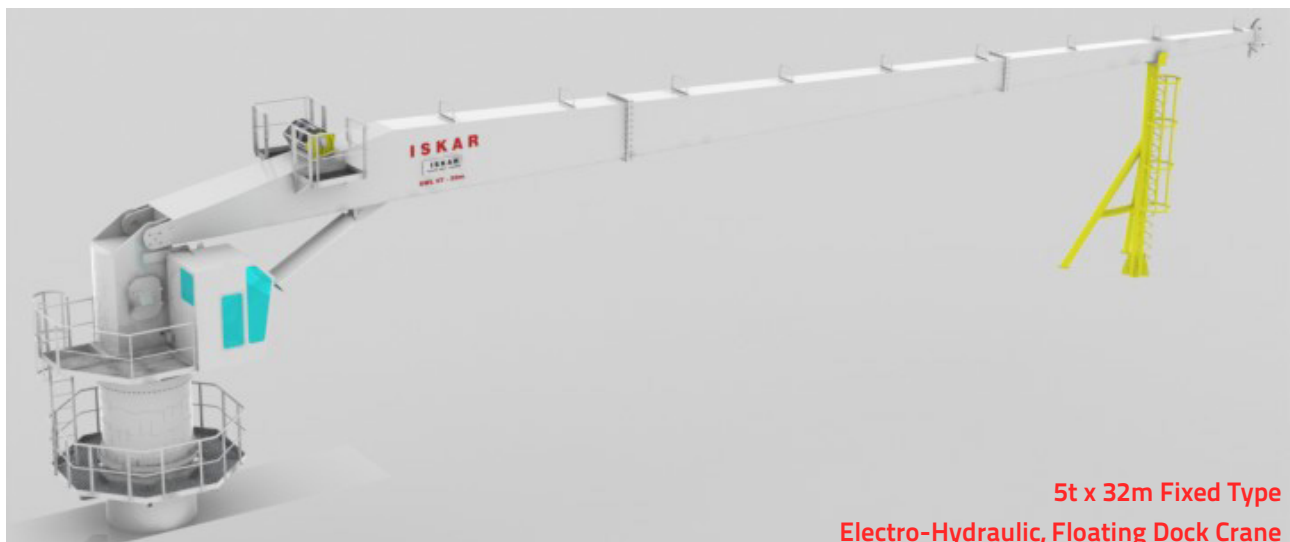


Narrow Span Travelling Dock Crane;

Electro hydraulic or fully electric actuated travelling jib cranes for docks with narrow rail span and berth extensions on sea.

Fixed Type Floating Dock Crane;

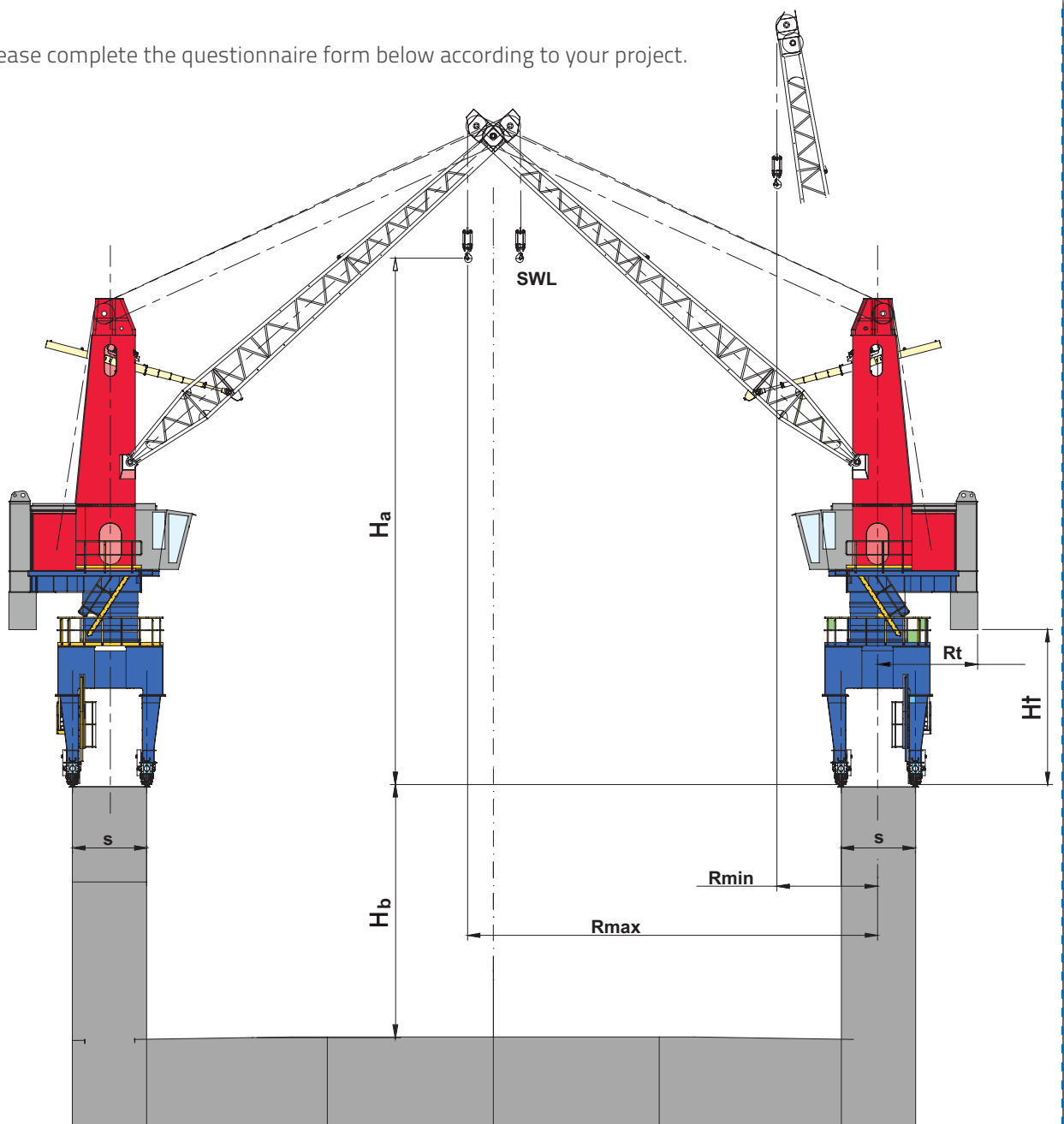
Fixed type electro hydraulic jib crane with extended jib length and appropriate capacity for floating dock implementation for new shipyards.



**5t x 32m Fixed Type
Electro-Hydraulic, Floating Dock Crane**

CRANE QUESTIONNAIRE FORM

Please complete the questionnaire form below according to your project.



QUESTIONNAIRE FORM

Company : _____ Contact Person : _____

E-Mail : _____ Telephone : _____

Address : _____

Country : _____

Dimensions

Please fill the table below according to your project requirements.

If there is no constraining measure or the feature is left to manufacturers specs mark as n/a.

Capacity*	SWL	_____ t	Number of cranes required	_____
Maximum Outreach	Rmax	_____ t	Track Length	_____ m
Minimum Outreach	Rmin	_____ t	Rail Type	_____
Rail Span	S	_____ m	Portal clearance	a x b _____ m
Hook height above Rail	Ha	_____ m	Tail radius	Rt _____ m
Hook height bellow Rail	Hb	_____ m	Slewing part height	Hr _____ m

* Assuming constant load operation, single hook operation. Otherwise please define separately.

Allowable wheel load on dock deck	_____ t	_____	Speeds
Power Supply	_____ V _____ Hz		Hoisting _____ m/min
Position of cable tray	inside of wheels <input type="checkbox"/>		Travelling _____ m/min
	outside of wheels <input type="checkbox"/>		Luffing _____ m/min
	water side <input type="checkbox"/>		Slewing _____ m/min
	dock side <input type="checkbox"/>		
Level Luffing required?	Yes <input type="checkbox"/>		*All speed controls are stepless
	No <input type="checkbox"/>		frequency inverter controlled
Floating dock status	available <input type="checkbox"/>		between 0 – max. values as standard.
	under construction <input type="checkbox"/>		

Date, when the cranes shall be ready on dock _____ / _____ / _____



OUR VENDORS

SIEMENS

SEW
EURODRIVE

Rexroth
Bosch Group

brevini
power
transmission

ABB

Schneider
Electric
Telemecanique

International

WERMA
SIGNALTECHNIK

DEUBLIN
Rotating Union

Stromag
safety in motion

galvi
BRAKING FORCE

HIRSCHMANN

PRYSMIAN
CABLES & SYSTEMS

TURCK

ALLFETT
LUBRICATION EQUIPMENTS

HELUKABEL

TEMPA PANO

onurkabin

PAT

RITTAL



spobu

Your Partner from Turkey

iskar

Contact Information

ISKAR Mühendislik
Makina Taahhüt San. ve Tic. Ltd. Şti.

Ahmet Cevdet Paşa Sok. YKB D Blok
11/6 Kadıköy, İstanbul - 34744 Turkey

Phone +90 216 373 3224

Fax +90 216 372 4959

eMail iskarltd@iskarltd.com

Web www.iskarltd.com

